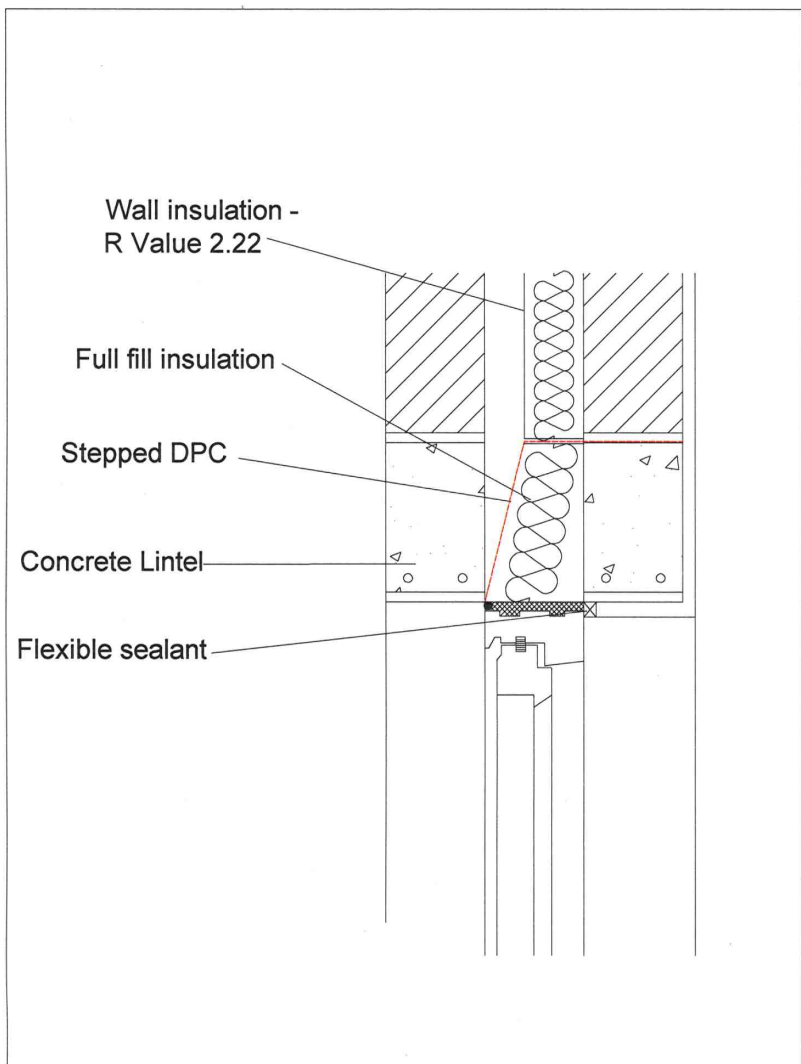


HEAD DETAIL



Notes

1. Detail tested in accordance with BRE IP 1/06
2. R-Value = Thermal Resistance ($m^2 \text{ k/W}$)
3. Ensure all cavities are kept clear of mortar snots or other debris during construction.

CHECKLIST (TICK)

THERMAL PERFORMANCE OF JUNCTION

- Ensure that all gaps around and between lintels are filled with tightly packed insulation material.
- Ensure that partial fill insulation is secured firmly against the inner leaf of the cavity wall.

AIR BARRIER CONTINUITY

- Apply flexible sealant to all interfaces between the internal air barrier and the window/door frame members
- If forming the air barrier to the walls with the blockwork inner leaf or a parge coat on blocks, a flexible sealant should be installed between the cavity closer and blockwork wall.
- Seal all penetrations through air barrier using a flexible sealant.
- Complying with all of the above checklist items will help achieve the design air permeability and may effect a reduced testing regime.*

AIR BARRIER OPTIONS

- Plaster coat, or
- Blockwork inner leaf/parge coat applied to internal face of inner leaf with plasterboard over, or
- Plasterboard on dabs with continuous ribbon of adhesive around all openings, along the top and bottom of the wall, and at internal and external corners.

SITE MANAGER/SUPERVISOR: _____
 SITE NAME: _____
 PLOT No: _____
 DATE: _____

